

<h1>Product Information Bulletin</h1>		PIB: CS2008-014
		Date: October 14, 2008
PRODUCTS AFFECTED: GSC Controls	SUBJECT: Replacement of old GSC Controllers	
MODELS AFFECTED: 10100101 and 515466		

Component	S1X-26 GSC Controller
Modified	Due to the obsolescence of the microprocessor used on the S1X-26 controller, we will be replacing future orders with the S1X-46 ASC controller.
Date of introduction	This change will take place effective immediately

The K196C microprocessor on the S1X-26 AGC controller is being made obsolete by the manufacturer. As a result Sauer-Danfoss will transition all users of the S1X-26 AGC controller to the S1X-46 AGC controller. The new controller uses the same connector and it is pin for pin compatible. The housing is the same so mounting will be consistent between the two controllers.

Machine performance should be identical. However, there is a required conversion process due to the fact that the parameter file is not the same. Please refer to *Appendix A* for details on the conversion process.

The software on both controllers has the same GSC functionality.

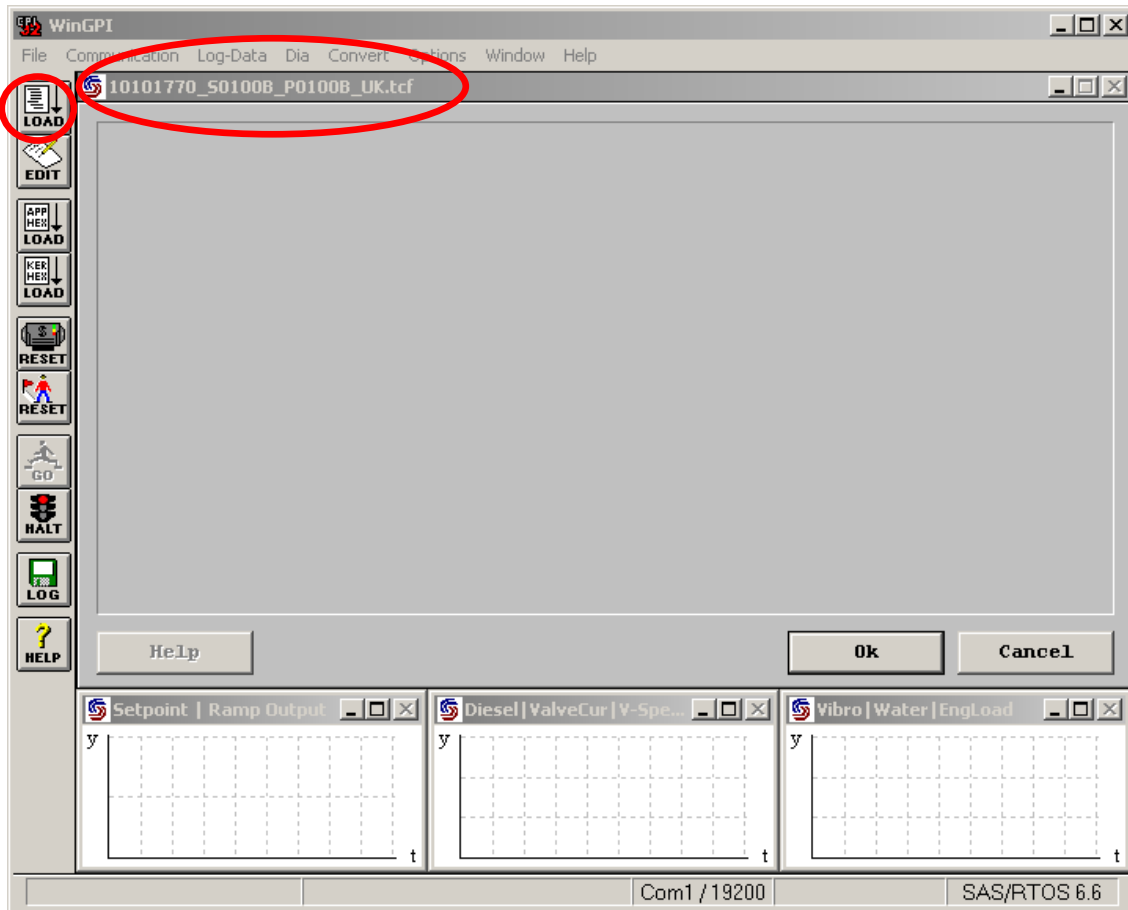
Old Part Number – 10100101 or 515466

New Part Number – 10101770

Appendix A – Process for Conversion from S1X-26 to S1X-46

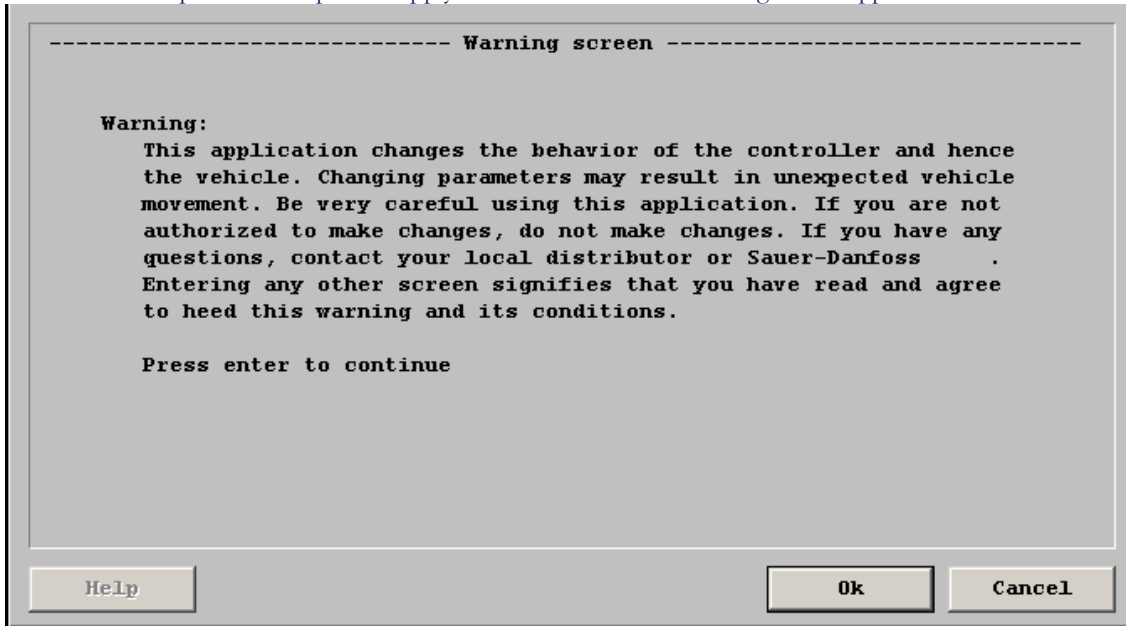
Step 1:

Connect serial port to your PC and open WinGPI, load current TCF file 10101770_S0100B_P0001B_UK.TCF using the 'LOAD' button.



Step 2:

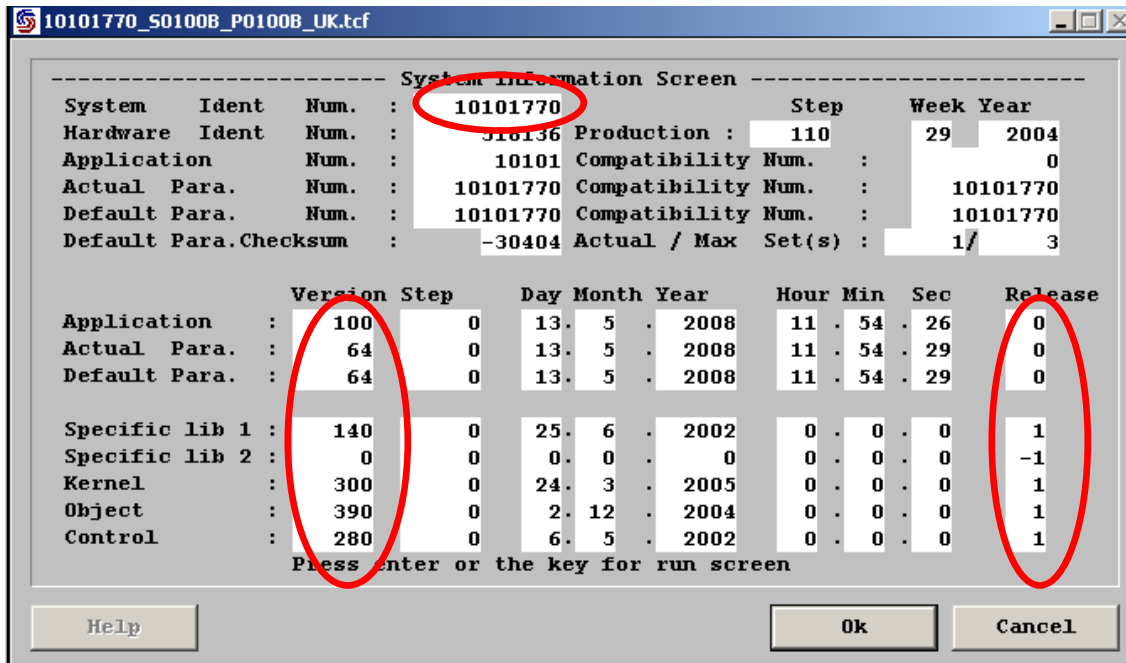
Connect the sample unit with power supply and switch it on. The warning screen appears.



Step 3:

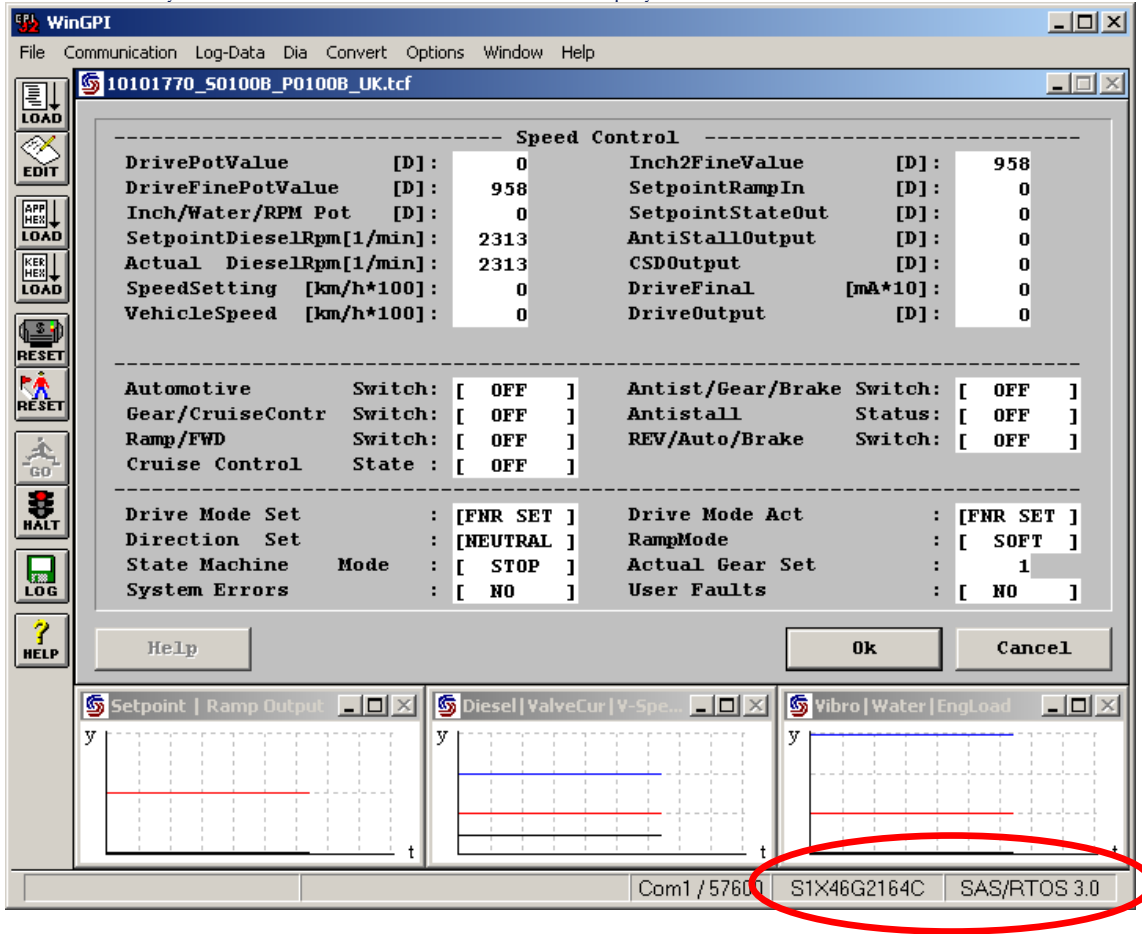
Press 'Enter' key to display the System Information screen. Check the following items:

- System Identnumber: 10101770
- Application Version: 100 incl. Release flag: 0
- Kernel Version: 300 incl. Release Flag: 1



Step 4:

Press 'Enter' key four times to enter the Run Mode and display the Main Data Screen.



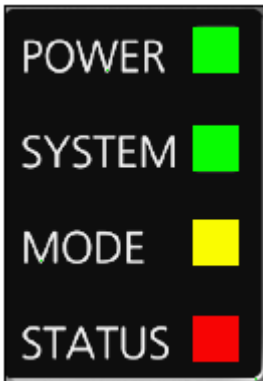
Please verify the correct hardware Type **S1X-46** and the **SW-Kernel Version 3.0**

Step 5:

Please verify the status of the LED's at the hardware.

The yellow LED must flash with a frequency of about 1Hz.

The red LED can flash regarding application specific requirements and is not relevant for production.



Generic AGC System

Conversion of parameters from S1X-26 to S1X-46

The parameter conversion has to execute by the “Global PROPEL Application Software Team NMS” itself or by an experienced “GSC on S1X-46” Sauer-Danfoss employee.

First of all we need the parameter Hex-file, the parameter Prm-file and the application Hex-, Prm- and Ini-file from your customer to be sure which application version is used. Because of not all customers are using the latest released version 515466_S0145_P0100.

After we converted the parameter file, you have to download the converted parameter file.

Make sure that the application is running and perform the transfer test document.