

DP600 Series Graphical Terminals

INTRODUCTION

The Sauer-Danfoss DP600 Series of PLUS+1™ compliant Graphical Terminals provides the best performance to fit the needs of today's mobile machines.

DP600 design allows both in-cab and open usage.

Up to two external video inputs provide a good overview and ensure safe operation of your mobile equipment.

High resolution, transflexive TFT color and monochrome LCD display options fit to your budget without losing performance.



 COMPLIANT

DP600 Series Graphical Terminals

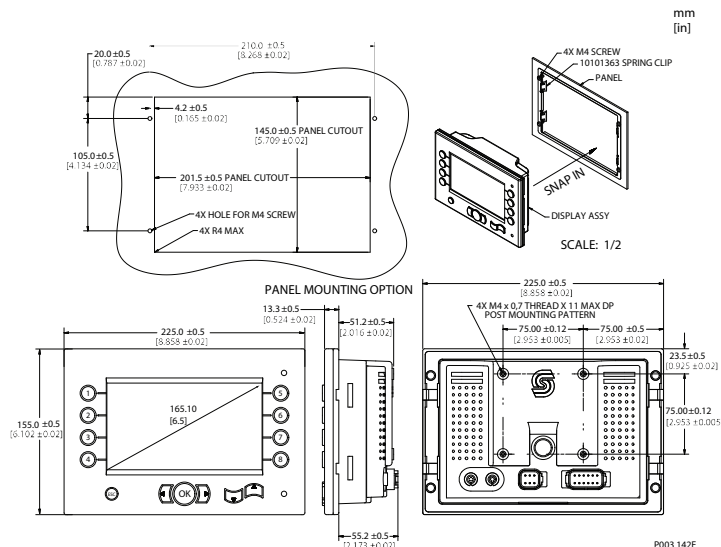
Features

- Same outside dimensions for both screen variants:
 - 256 Color advanced TFT 400 x 240 pixels, transflexive
 - Monochrome LCD 320 x 240 pixels, transflexive
- Two mounting options:
 - Flush mount in dashboard
 - Stand alone post mount according to VESA standard 75mm x 75mm [2.953 in x 2.953 in]
- Fully integrated connectors and silicone keypad provide water and dust protection from all sides
- Wide storage and operating temperature range
- GORE-TEX® membrane prevents moisture ingress and screen fogging
- Keypad with 14 buttons (8 soft-keys + 6 buttons for navigation)
- All buttons have green backlight design for low light and night use
- Ultra-bright red alarm LED
- ISOBUS virtual terminal functionality
- Protective glass integrated into keypad provides superior antiglare and contrast control under all light conditions
- Integrated light sensor for automatic backlight adjustment
- Inputs for external menu navigation button give the driver full control while driving
- Up to two external video inputs
- Digital output for external ALARM buzzer

Technical data

	Graphical Terminal	DP600	DP601	DP610	DP620
Hardware	Processor	ARM 7			
	ROM	8 MB			
	RAM	8 MB			
	FRAM	8 MB (256k available for application data storage)			
	Real Time Clock	Date and Time accuracy: 1 second/24 hours Minimum back-up time: 30 days			
	Power Supply/ Consumption	9–36 VDC/ 15W maximum			
Connector	Deutsch DTM 12-pin	•	•	•	•
	Deutsch DTW 6-pin	•	•	•	•
	Binder 7-pin (USB/RS232) Binder 5-pin (video)	• •	• •	• -	• -
Display	Resolution (dpi)	400 x 240	400 x 240	400 x 240	320 x 240
	Size/Type	6.5 inch/ TFT color	6.5 inch/ TFT color	6.5 inch/ TFT color	6 inch/ LCD monochrome
	Transflexive	•	•	•	•
Environmental	IP rating	IP67 Note: Unused connections must have sealing plugs for IP rating to be valid.			
	Operating temperature -30° to +70° C (-22° to +158° F) -20° to +70° C (-4° to +158° F)	• -	• -	• -	- •
	Storage temperature	-30° to +80° C (-22° to +176° F)			
	Weight	.95 kg (1.14 kg in packaging)			
	Vibration	5g			
	Shock	30g			
	EMC immunity	100 V/m			
	Electrostatic discharge	15 kV			
Communication	CAN 2.0B	2 Baud rates: 111 kbit, 250 kbit, 500 kbit, 1Mbit 2 pins for CAN shield (acc. to J1939) (2nd CAN port internally terminated at 120Ω)			
	ISOBUS ISO11783	-	•	-	-
	USB 2.0	•	•	•	•
	RS232	Baud rates: 1200, 2400, 9600, 19,200, 28,800, 38,400, 115,200 baud. No handshake available.			
Inputs/Outputs	Digital Inputs	3 (2 inputs designed for 90° A/B encoder signals)			
	Integrated ambient light sensor	•	•	•	•
	Integrated high brightness LED	•	•	•	•
	Video input (composite PAL)	2 Note: only one video input at a time possible	2 Note: only one video input at a time possible	-	-
	Digital output (0.5A)	1			

Installation drawing



Note: For pin configuration details, see the document *DP600 Technical Information* (520L0699).

Ordering Information

DP600	Part Number 10100890
DP601	Part Number 10101912
DP610	Part Number 10100889
DP620	Part Number 10100888