



TAD 6922/E88CC Premium Select High-Mu Twin Triode

The **TAD™ 6922/E88CC** is the High-End-Version of the ECC88 or 6DJ8. Selected for perfect balanced audio output and lowest noise. The 6922 is used worldwide from demanding Hi-Fi amplifier manufacturers seeking for highest consistent quality and lifetime. Very rich yet defined bass response with potent mids and shiny trebles with excellent tone separation makes for a very musical response.

Characteristics of a bogey tube:

Electrical	
Heater Voltage (AC or DC) in Volts	6.3+/-0.5
Heater Current in mA	300+/- 10%
Heating	
Cathode-to-heater potential, max.	Indirect
Direct interelectrode capacitances, max.***	200 V
Grid to plate	1.4 pF
Grid to cathode	3.1 pF
Grid to heater	2.6pF
Plate to cathode	1.7 pF
Mechanical	
Operating Position	Any
Base	E9-1, Small Button 9 Pin
Dimensions:	
Height	56.0 mm
Seated height	49.3 mm
Diameter	22.3 mm
Cooling	conventional
Approximate net weight	15 g

***Without external shielding, nominal values

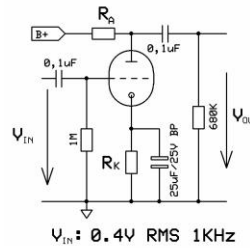
AF Power Amplifier

Maximum ratings	
DC plate voltage	300 V
Positive DC Grid Voltage	0 V
Negative DC Grid Voltage	-100 V
Plate dissipation	1.6 W
Bulb temperature (surface hottest point)	170°C
Cathode Current	20 mA

RT-6922, E88CC

B+ / V	R _A / kΩ	R _K / kΩ	V _{Out} / V _{RMS}	V _{Out} / V _{IN}	THD / %	I _A / mA
200	47	1,50	10,0	25,0	0,96	2,0
250	47	1,20	10,4	26,0	0,73	2,8
300	47	1,00	10,6	26,5	0,6	3,6
350	47	0,82	10,8	27,0	0,51	4,5
400	47	0,68	10,9	27,3	0,44	5,6
200	100	1,80	10,4	26,0	0,76	1,3
250	100	1,50	10,6	26,5	0,62	1,7
300	100	1,20	10,9	27,3	0,56	2,2
350	100	1,00	11,1	27,8	0,51	2,6
400	100	0,82	11,2	28,0	0,49	3,0
200	220	2,70	10,3	25,8	0,74	0,7
250	220	2,20	10,6	26,5	0,65	0,9
300	220	1,50	10,9	27,3	0,63	1,1
350	220	1,20	11,1	27,8	0,62	1,3
400	220	1,00	11,3	28,3	0,61	1,6

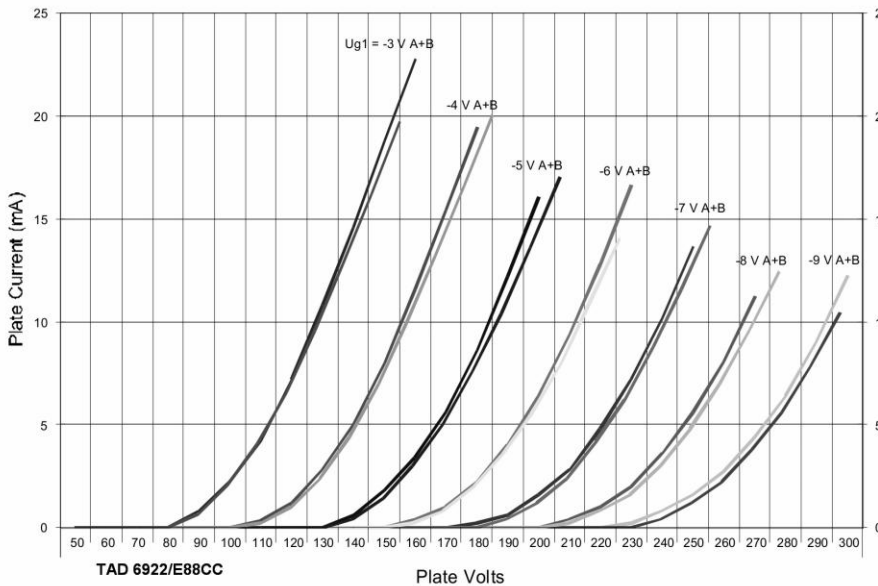
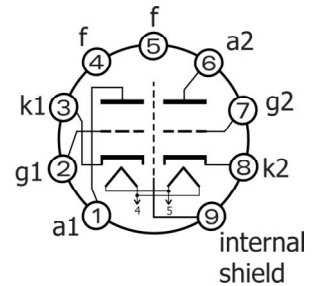
Test arrangement:



V_{IN}: 0.4V RMS 1KHz

Bottom View

Octal Base Connections



Outline View

