



TAD – 5751 Premium Selected High Performance High-Mu Twin Triode



The **TAD™ 5751** is a High Performance High-Mu Twin Triode. The **TAD™ 5751** brings back that thick and woody Vintage Tone of the legendary Fender Tweed Amps of the 50's. Especially recommended for V1 positions in low gain no master volume clean amps.

Can be used in any position which call for a 12AX7/ECC83 or 7025 to get a warmer and cleaner tone and to reduce gain to about 70%. Very suited for Fender Blackface models. The **TAD™ 5751** is not suited for cathode follower applications due to a low cathode to heater max design voltage.

Also used in some HI-End audio applications with mild yet precise overtones.

Characteristics of a bogey tube:

Electrical		
Heater:	Series	Parallel
Voltage (AC or DC)	12.6V +/-1.0	6.3+/-0.5
Current	0.175	0.375
Heating		Indirect
Cathode-to-heater potential, max.		90 V
Direct interelectrode capacitances, max.***		
Grid to plate	1.7 pF	
Grid to cathode	1.6 pF	
Grid to heater	1.3 pF	
Plate to cathode	0.3 pF	
Mechanical		
Operating Position		Any
Base		E9-1, Small Buton 9 Pin
Dimensions:		
Height	56.3 mm	
Seated height	49.2 mm	
Diameter	22.0 mm	
Cooling		conventional
Approximate net weight		13 g

***Without external shielding, nominal values

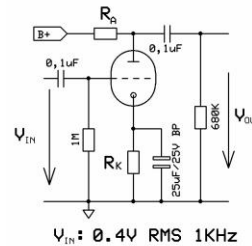
AF Power Amplifier

Maximum ratings	
DC plate voltage	300 V
Positive DC Grid Voltage	0 V
Negative DC Grid Voltage	-50 V
Plate dissipation	1.0 W
Bulb temperature (surface hottest point)	180°C
Cathode Current	5 mA

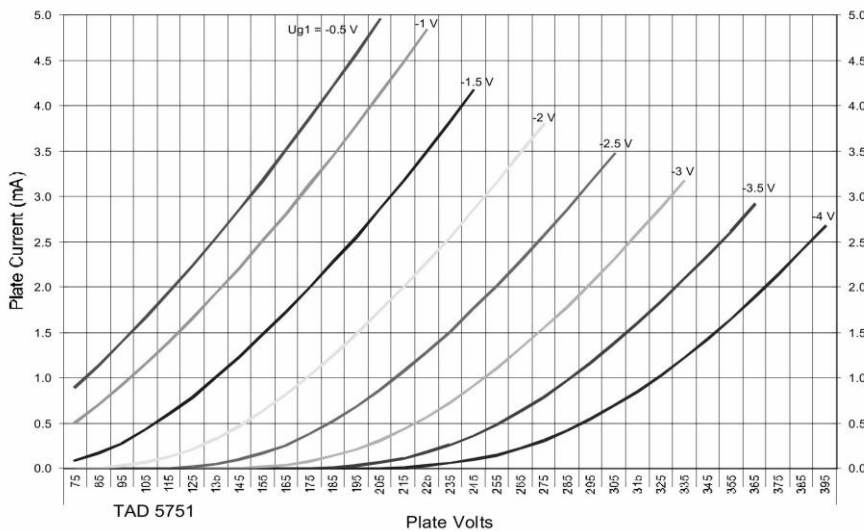
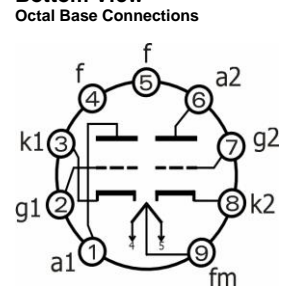
RT009, 5751

B+ / V	R _A / kΩ	R _K / kΩ	V _{Out} / V _{RMS}	V _{Out} / V _{IN}	THD / %	I _A / mA
200	47	1.50	15,1	37,8	3,7	1,1
250	47	1.20	16,1	40,3	2,8	1,5
300	47	1.00	16,9	42,3	2,3	1,9
350	47	0.82	17,8	44,5	1,9	2,4
400	47	0.68	18,5	46,3	1,7	3,1
200	100	1.80	19,3	48,3	3,2	0,8
250	100	1.50	20,2	50,5	2,3	1,1
300	100	1.20	21,0	52,5	1,8	1,4
350	100	1.00	21,6	54,0	1,6	1,7
400	100	0.82	22,2	55,5	1,4	2,1
200	220	2.70	21,5	53,8	3,5	0,5
250	220	2.20	22,7	56,8	2,6	0,6
300	220	1.50	23,8	59,5	1,9	0,9
350	220	1.20	24,4	61,0	1,6	1,0
400	220	1.00	24,9	62,3	1,3	1,2

Test arrangement:



Bottom View



Outline View

