

ESPMC

Polycrystalline Solar Module

KEY FEATURES



5 Busbar Solar Cell:

5 busbar solar cell adopts new technology to improve the efficiency of modules, offers a better aesthetic appearance, making it perfect for rooftop installation.



High Power Output:

Polycrystalline 60-cell module achieves a power output up to 290Wp.



Low-light Performance:

Advanced glass and surface texturing allow for excellent performance in low-light environments.



Reliability Warranty:

12 years' product warranty.
Power warranty of 90% up to 10 years and 80% up to 25 years.



WATTS
POSITIVE
TOLERANCE



12 YEARS
PRODUCT
WARRANTY



10 YEARS
PERFORMANCE
GUARANTEE 90%



25 YEARS
PERFORMANCE
GUARANTEE 80%

POLYCRYSTALLINE

ELECTRICAL PERFORMANCE

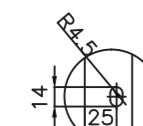
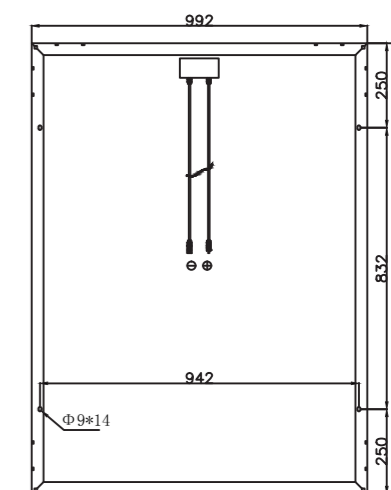
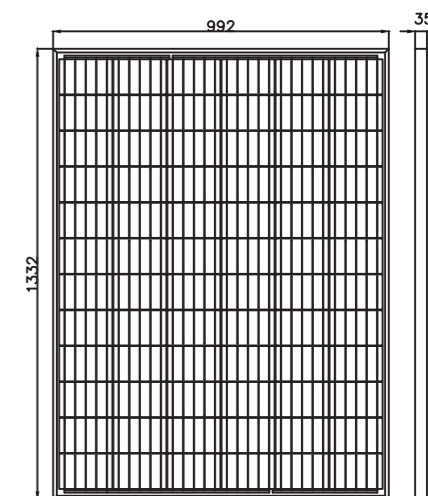
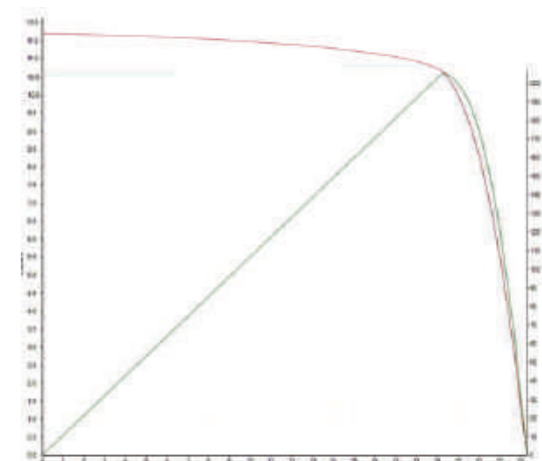
Module type: ESPMC	200
Maximum Power(Wp)	200W
Open circuit Voltage(Voc)	22.7V
Short circuit Current(Isc)	11.86A
Maximum Power Voltage(Vm)	18.2V
Maximum Power Current(Im)	11A
Module efficiency	15.1%
Maximum Series Fuse	15A
Watts positive tolerance	0~+3%
Number of Diode	3
Standard Test Conditions	1000W/M ² ,25°C,AM1.5
Maximum System Voltage	1000V/DC
Temperature-Coefficient Isc	+0.08558%/°C
Temperature-Coefficient Uoc	-0.29506%/°C
Temperature-Coefficient Pmpp	-0.38001%/°C
Normal Operating Cell Temperature	-40°C...+85°C
Load Capacity for the cover of the module (glass)	5400Pa(IEC61215)(snow)
Load Capacity for the front & back of the module	2400Pa(IEC61215)(wind)
Product Certificate	TUV(IEC 61215,IEC 61730),CE, ROHS,PID Resistant,INMETRO
Company Certificate	ISO9001,ISO14001,ISO18001

MECHANICAL CHARACTERISTICS

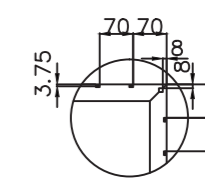
Front cover (material / thickness)	low-iron tempered glass / 3.2mm
Backsheet (color)	TPT in white
Cell (quantity / material / dimensions)	72 / Polycrystalline silicon / 104x156.75mm
Frame (material / color)	aluminum hollow-chamber frame on each side anodized aluminum alloy / silver
Junction box (protection degree)	≥IP68
Cables & Plug connectors	2x900mm / 4mm ² & MC4 compatible
Module Dimensions (L / W / H)	1332x992x35mm
Module Weight	14.2kg
Application class	Class A
Electrical protection class	Class II
Fire safety class	Class C

PACKING

Container Size	Units/Pallet (PCS)	Weight/Pallet (KG)	Pallet Measurement (mm)	Units/Container (PCS)
20GP	30	450	1390x1050x1120	480
40HQ	30	450	1390x1050x1120	1040
	35	520	1690x1130x1300	



安装孔细节



排水孔细节



铝框截面

