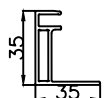
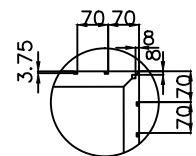
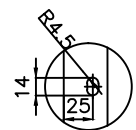
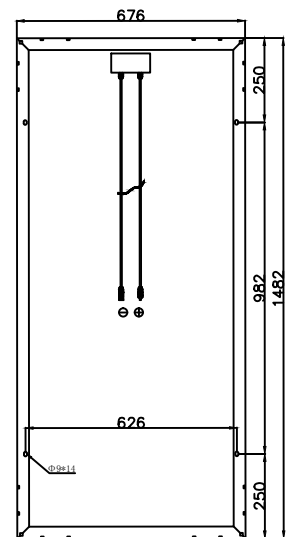
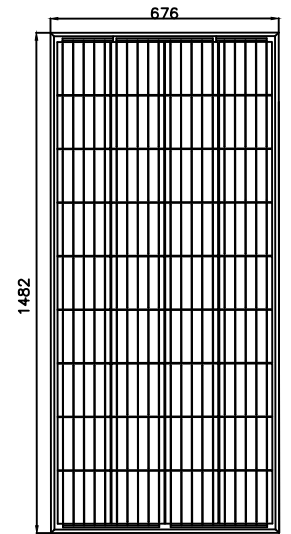


# ESPMC160

## Specifications

Size of module	1482x676x35mm
Cell Type	POLY CELL 156x156mm 5BB
Number of cells	36(4x9)
Maximum Power(Wp)	160W
Tolerance of Power(%)	+3%
Open circuit Voltage(Voc)	23.2V
Short circuit Current(Isc)	9.05A
Maximum Power Voltage(Vm)	18.85V
Maximum Power Current(I <sub>m</sub> )	8.5A
Maximum Series Fuse	15A
Number of Diode	2
Cable type and Length	4mm <sup>2</sup> ,90cm
Standard Test Conditions	1000W/M <sup>2</sup> ,25 °C ,AM1.5
Maximum System Voltage	1000V/DC
Temperature-Coefficient I <sub>sc</sub>	+0.08558%/ °C
Temperature-Coefficient U <sub>oc</sub>	-0.29506%/ °C
Temperature-Coefficient P <sub>mp</sub>	-0.38001%/ °C
Normal Operating Cell Temperature	45 °C
Module efficiency	15.9%
Product Certificate	TUV(IEC 61215,IEC 61730),CE,ROHS
Company Certificate	ISO9001,ISO14001,ISO18001



## PACKING

Container Size	Units/Pallet (PCS)	Weight/Pallet (KG)	Pallet Measurement (mm)	Units/Container (PCS)
20GP	26	310	1540x730x1100	520
40HQ	31	365	1540x730x1275	1364
	31	365	1540x730x1275	



ERA SOLAR and the ERA SOLAR logo are trademarks or registered trademarks of ERA SOLAR Corporation.

January 2019 ERA SOLAR Corporation. All rights reserved.Specifications included in this datasheet are subject to change without notice.

